

Intelligent Energy



Europe



EU RES policy
framework and relevant
initiatives for
municipalities to
promote RES in the
urban environment

María LAGUNA
Project officer EACI, European Commission
maria.laguna@ec.europa.eu

Contents

1. The Renewable energy directive
2. The contribution of IEE Programme
3. Project highlights
4. Other initiatives

Bases of the European Energy Policy



Climate
change

security and
continuity of
energy
supplies

Energy efficiency and
renewable energy
sources

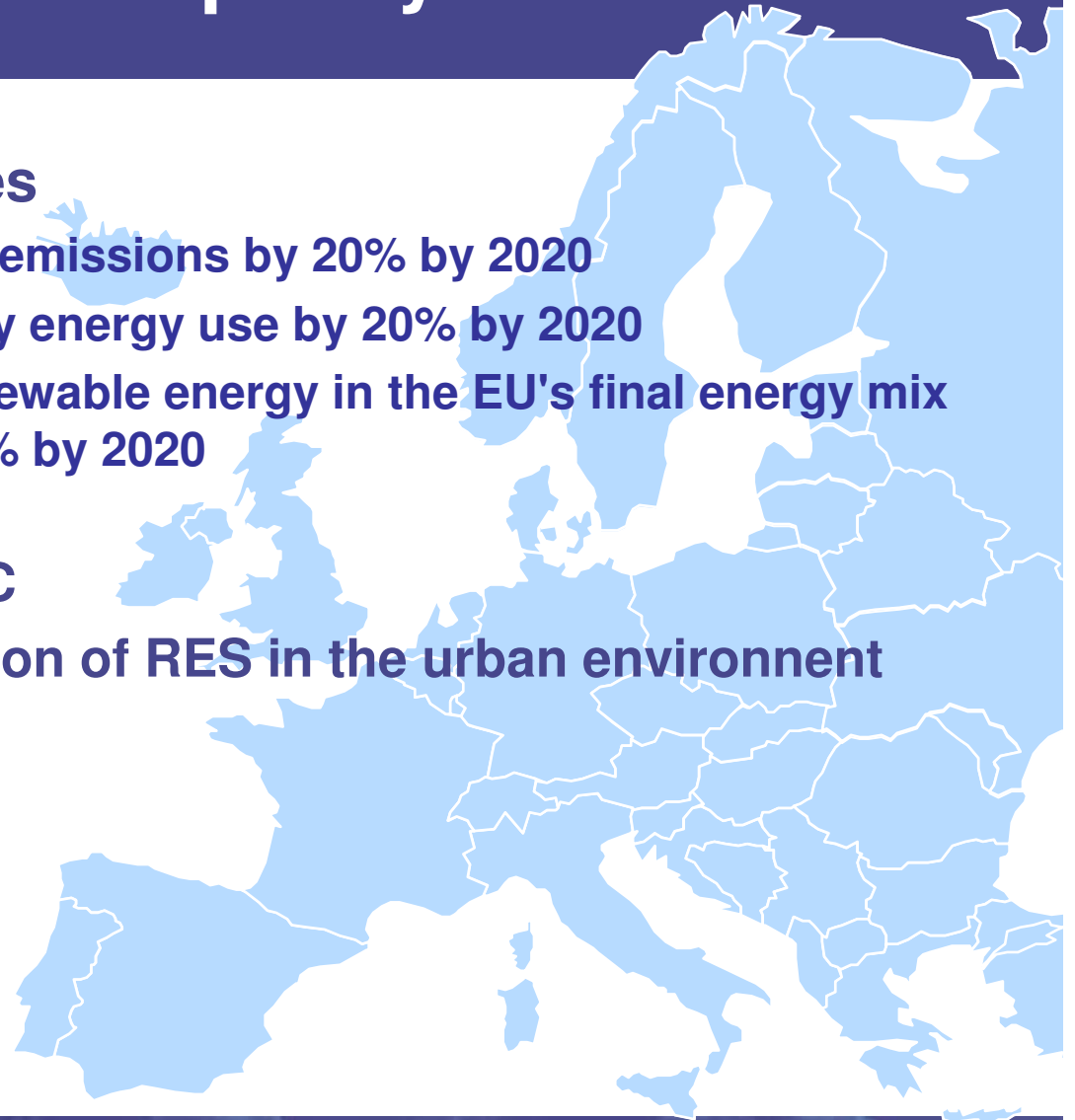
Competi-
tiveness



European policy

20-20-20 energy objectives

- ▶ reduce greenhouse gas emissions by 20% by 2020
 - ▶ reduce its global primary energy use by 20% by 2020
 - ▶ increase the level of renewable energy in the EU's final energy mix from 8,5% in 2005 to 20% by 2020
- RES directive 2009/28/EC
 - Initiatives for the promotion of RES in the urban environment



Intelligent Energy



Europe

Directive 2009/28/EC on the promotion of the use of energy from renewable sources

The RES directive:

- Sets Mandatory national targets for RE shares by 2020 (EU targets 20%, including 10% renewable share in transport);
- Requires National action plans;
- Introduces the possibility of cooperation mechanisms among to provide flexibility to Member States in reaching their targets;
- Requires reduction of administrative and regulatory barriers; use of minimum levels of energy from RES in new/refurbished buildings (**Art 13**)
- Requires improvements in provision of information & training (**art 14**)
- Requires improvements in access to the electricity grid;
- Creates a sustainability regime for biofuels.



Intelligent Energy



Europe

The RES Directive: Planning, building codes (art. 13): – relevance for RES in the Urban environment

- Recommend the use of RES and district heating – for planning of residential and industrial areas, city infrastructure planning
- Measures to be introduced in building regulations and codes to increase RES share in buildings sector
 - Minimum RES levels by 2014
 - Exemplary role of public buildings by 2012
 - Also energy efficiency requirements of systems and equipment



Intelligent Energy  Europe

The RES Directive: (art 13) Administrative procedures — relevance for RES in the urban environment

- **Ensure that national rules on authorisation procedures are proportionate and necessary:**
 - ▶ Coordinated, defined responsibilities at national – regional - local level, transparent timetables
 - ▶ Comprehensive information on the processing of applications and on assistance available
 - ▶ Streamlined administrative procedures
 - ▶ Objective, transparent, non-discriminatory rules
 - ▶ Transparent, cost-related administrative charges
 - ▶ Simplified, less-burdensome procedures for small installations

The RES Directive: Information and training (art. 14) – relevance for RES in the urban environment

Member States shall ensure that:

- Information is available on support measures
- Information is available on net benefits, costs, EE of equipment and systems
- Certification schemes or equivalent qualification schemes are available by 31.12.2012 for installers of small scale RES systems (scheme based on minimum criteria laid down in ANNEX IV).
Mutual recognition at EU level;
- Information available on certification schemes and list of installers;
- Guidance available for planners and architects;
- Information, awareness raising and training to inform citizens



What is next?

- Directive entered into force in June 2009, to be implemented by Member States by December 2010.
- National Action Plans are due by June 2010.



The role of regional and local authorities in the implementation of the Directive

● Implementation of the RES directive

- Setting own targets and objectives
- Involvement in the preparation of National Action Plans
- Awareness raising, information, guidance, training
- Implementation of regional/ local support schemes or minimum obligations in buildings (building codes), public buildings
- Cooperation and coordination of authorisation procedures local-regional- national authorities
- Spatial planning, city planning
- Sharing best practices



Intelligent Energy  Europe

RENEWABLE ENERGY DIRECTIVE 2009

Supporting programmes and tools at EU level

IEE programme

- ▶ http://ec.europa.eu/energy/intelligent/index_en.html
- ▶ IEE promotion and dissemination projects
- ▶ Elena Initiative -European Investment Bank
- ▶ BUILD-UP, MANAGENERGY, EUSEW, etc...

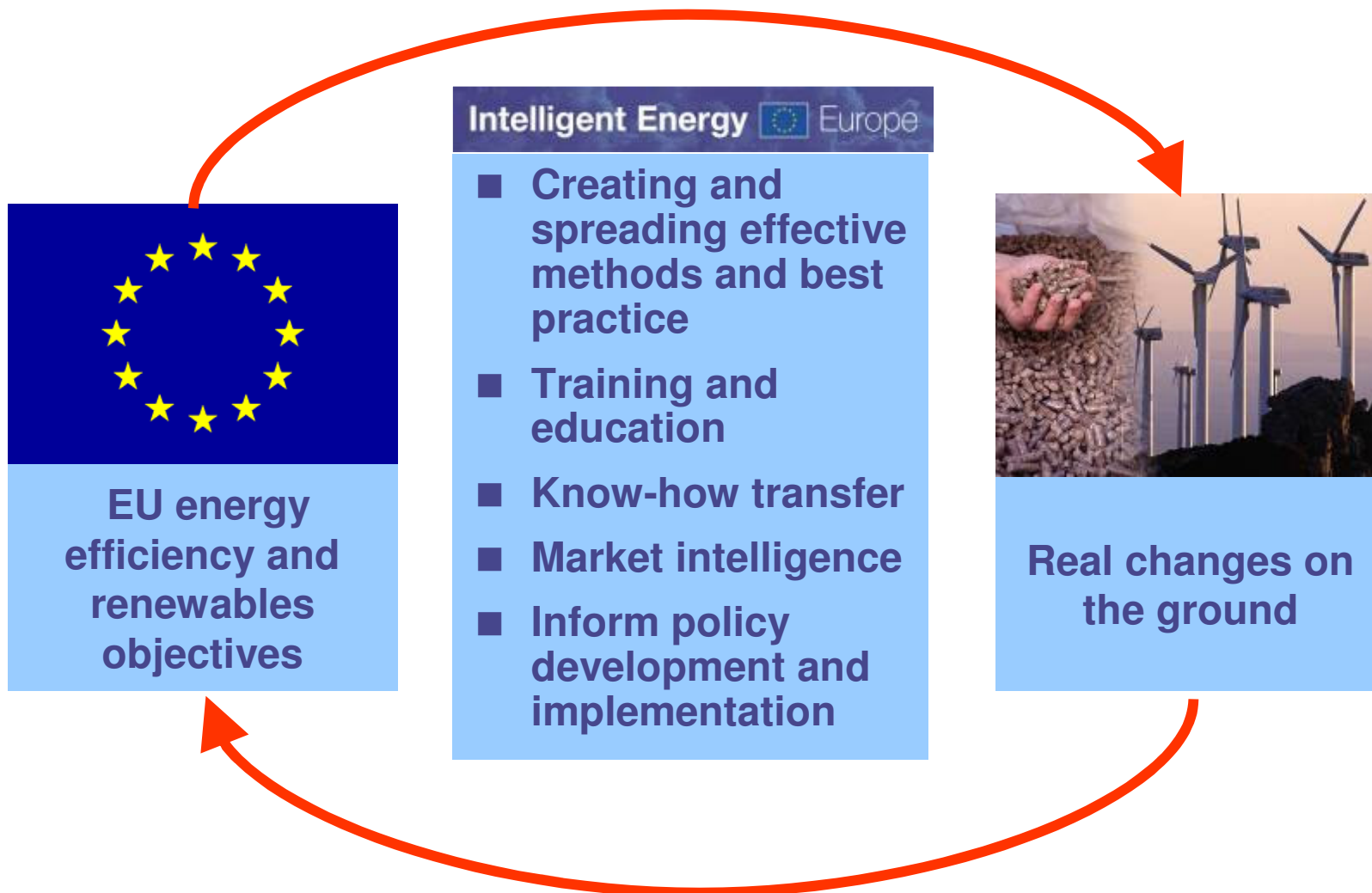
Others (i.,e Covenant of Mayors, Concerto etc..)

- ▶ <http://www.eumayors.eu/>
- ▶ <http://concertoplus.eu/>



Intelligent Energy  Europe

A programme to help convert policy into action



Intelligent Energy – Europe in a nutshell



- €730 million from 2007-13
- Supports EU renewable energy and energy efficiency policies and helps reach the 2020 targets
- Encourages the uptake of proven intelligent energy solutions
- Is not a technology development programme, unlike FP7
- Works to make Europe more competitive and innovative

How will this year's budget be spent?

(final figures tbc)

- **€ 56 million**
to support “promotion and dissemination projects”
(up to 75% of the eligible project costs)
- **€ 15 million**
for the “ELENA” facility of the European Investment Bank
- to support Market Replication Projects
- **€ 17 million**
to purchase services (tenders)
- **€ 16 million**
for concerted actions and other mechanisms



«Promotion and dissemination project»?

A project which...

- helps deliver the key EU climate change and energy objectives
- matches the priorities of the IEE Work Programme 2010
- involves at least 3 partners from different countries
- takes 2 to maximum 3 years to deliver
- is not a “hardware” type investment or research & development project!



Funding areas 2010



**Energy efficiency
(SAVE)**



**Energy-efficient
transport (STEER)**



**Renewable energy
sources (ALTENER)**



**Integrated
initiatives**

RES in buildings Priorities for 2010 (1)



- Accelerate **deployment** of biomass, geothermal and solar for heating / cooling, and PV electricity **individual systems** in energy efficient buildings and **district heating / cooling**
 - ▶ Promote **new building codes or ordinances**
 - ▶ **Capacity building** for local / regional authorities (planning)
 - ▶ **Stimulate investments** in renewable energy for groups of buildings to achieve economies of scale
 - ▶ Targeted information on support measures, benefits/costs and performance of RES systems

Actions should preferably be led by:

- **public authorities** (urban planners and energy specialists working together),
- organisations from the **building sector**, such as construction companies, architects, developers, housing associations,
- **energy service companies** aiming to invest in RES systems.



Intelligent Energy  Europe

RES in buildings Priorities for 2010 (2)

- **Projects that address Articles 13 and 14 of the RES directive that are the main drivers of specific actions in the building sector.**
- **With concrete engagement of actors from the building sector and from public authorities (as partners, or with any other proactive role, not only as recipients of info) is a priority of the key action RES in buildings.**
- **Ongoing and future IEE actions should be ambitious in terms of:**
 - Additional RES installations triggered during and after the action (MWh per year of new RE supplies);
 - Voluntary commitments by important market actors to install RES in new / refurbished buildings after the end of the action (MW per year, kW per m²);
 - Evidence that specific project outcomes have influenced the introduction or implementation of new plans, building codes or ordinances.



Intelligent Energy  Europe

Project Highlight (1)

PROSTO

Implementation of five best practice Solar Thermal Ordinances (STOs)

Partners: local authorities, technical and research institutes, solar energy association, energy agencies

Target groups: cities, local and regional authorities

Expected results



- **Development of optimized STOs**
- **Pilot implementations of STOs (local show cases) + demonstration of their high impact in five areas: the Region of Lazio and the Cities of Lisbon, Murcia, Stuttgart and Giurgiu**
- **Dissemination of project outcomes to potential new local authorities in Europe**
- **Over 10 new local authorities start concrete implementation on STO**



Intelligent Energy



Europe

Project Highlight (2)

POLIS

Solar energy in the urban planning process of five European cities

Partners: cities, local energy agencies, universities, consultants

Target groups: local authorities (energy, planning and urban departments).

Expected results

- Implementation of advanced planning and policy making process integrating solar aspects in European cities: at least six cities integrating solar energies as part in their urban planning (Paris, Lisbon, Munich, Vitoria, Lyon and Malmo).
- Establish a more comprehensive approach of interdisciplinary planning within local authorities.
- Identified methods and instruments for solar urban planning will be applied together with the local authorities in pilot actions.



Intelligent Energy



Europe

Project Highlight (3)

SDHtake-off

Solar District Heating (SDH) in Europe - Integration of large scale solar thermal plants in new and existing DH networks

Partners: DH associations, local energy planning experts , engineering company, solar utility

Target groups: local authorities, planners, local utilities, DH suppliers, housing sector



Expected results

- Analysis of current market conditions and barriers for SDH translated into recommendations for decision makers and support scheme managers
- Development of industry standards and guidelines for SDH
- Training courses on SDH for technical and non-technical staff (utilities, DH suppliers, developers, decision makers)
- Dissemination activities incl. SDH plant visits for market actors and decision makers

More projects are needed: the 2010 call for proposals

Expected publication date:

mid-March 2010

Expected deadline for applying:

mid-June 2010

Info day in Portugal on 13 April 2010

Info days in other countries: please check the website:

http://ec.europa.eu/energy/intelligent/events/ninfodays_en.htm



Intelligent Energy



Europe

Intelligent Energy – Europe: what's in the box?

Intelligent Energy  Europe



managenergy 



**ELENA – European Local
Energy Assistance**



Intelligent Energy  Europe



Commitments of Local Authorities when joining the Covenant of Mayors

- To go beyond the EU's CO₂ 20% reduction objective
- Prepare a Baseline Emission Inventory
- Set up a Sustainable Energy Action Plan
- Submit regular Implementation Reports
- Organise Local Energy Days

~~1297!~~

866 CITIES SIGNED UP

and commit to reduce CO₂ emissions on their territories

by at least **20%** by **2020!**



Intelligent Energy  Europe



Financial Institutions (European Investment Bank)

ELENA – European Local Energy Assistance

- **Technical assistance** facility for municipalities
- Financing **development** of bankable investment projects or programmes
- Aiming to **ensure the eligibility** of the supported investment projects or programmes for further **EIB funding**



Condition:

projects contribute to the achievement of the CO₂ reduction objectives fixed in the Sustainable Energy Action Plans within the Covenant initiative

-Gather building professionals, local authorities and citizens



**Public
authorities**



**Building
professionals**



**Building
occupants**

-Become THE European portal for energy efficiency in buildings

■ **2 main goals:**

- ▶ **Transfer best practices of energy savings measures and foster their uptake**
- ▶ **Keep the market updated about EU energy policy for buildings**

ManagEnergy

Tools and services for local and regional authorities and energy agencies

managEnergy 

- Interactive website
- Networking opportunities
- Capacity building workshops
- Case studies and good practices
- Education corner
- Information on EU legislation
- Annual events

www.managenergy.net



Intelligent Energy  Europe

Thank you for your attention!

Ms LAGUNA María

maria.laguna@ec.europa.eu



Intelligent Energy  Europe