



Universal accessibility in Toulouse Metropole

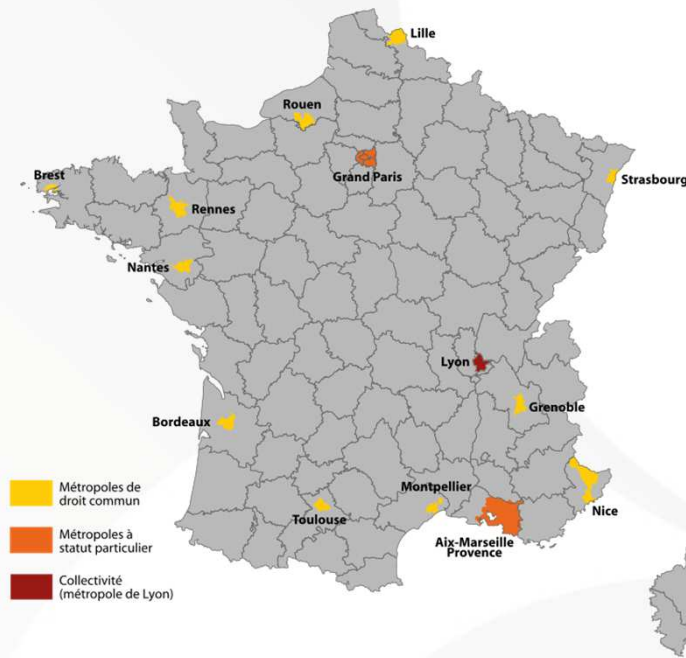
LISBONNE 16-17 March 2017

toulouse
métropole

- TOULOUSE – Introduction
- Toulouse - An important area of influence
- Universal accessibility, is a work of concertation
- Universal accessibility, is a global approach
- Universal accessibility, requires tools
- Universal accessibility – Sensitization of actors making public space
- Actions for accessibility in public transport

TOULOUSE - Introduction

- The city of Toulouse, in the heart of south-west of France is the country's fourth largest metropolitan area with a population of some 720 000 inhabitants.



Place du Capitole

- With a history going back more than 2000 years, Toulouse has its roots in Roman times but today is at the forefront of technology as the European aerospace centre.

Toulouse has been awarded both third prize in the Access City Award 2016 and a Special Mention as a “Smart City”

**toulouse
métropole**

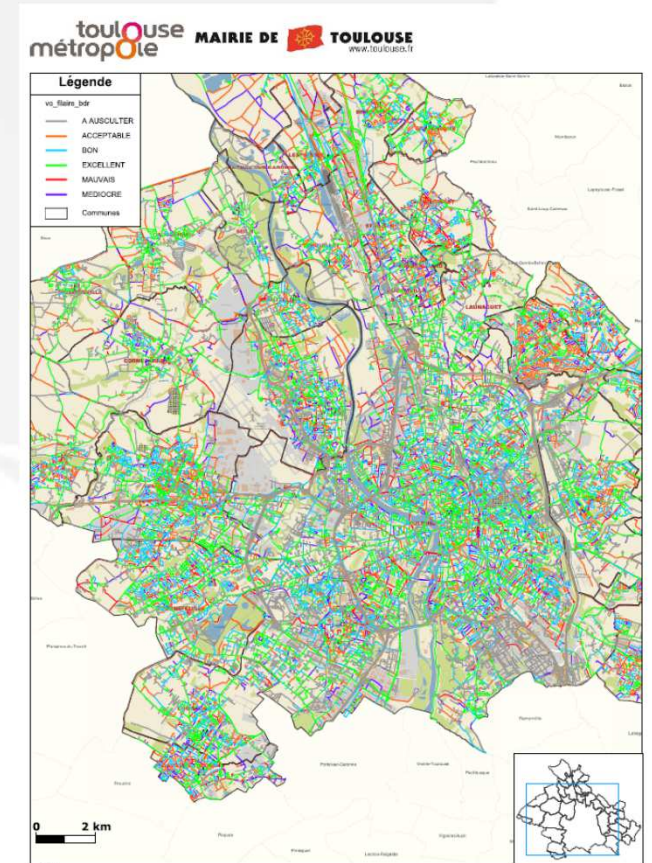
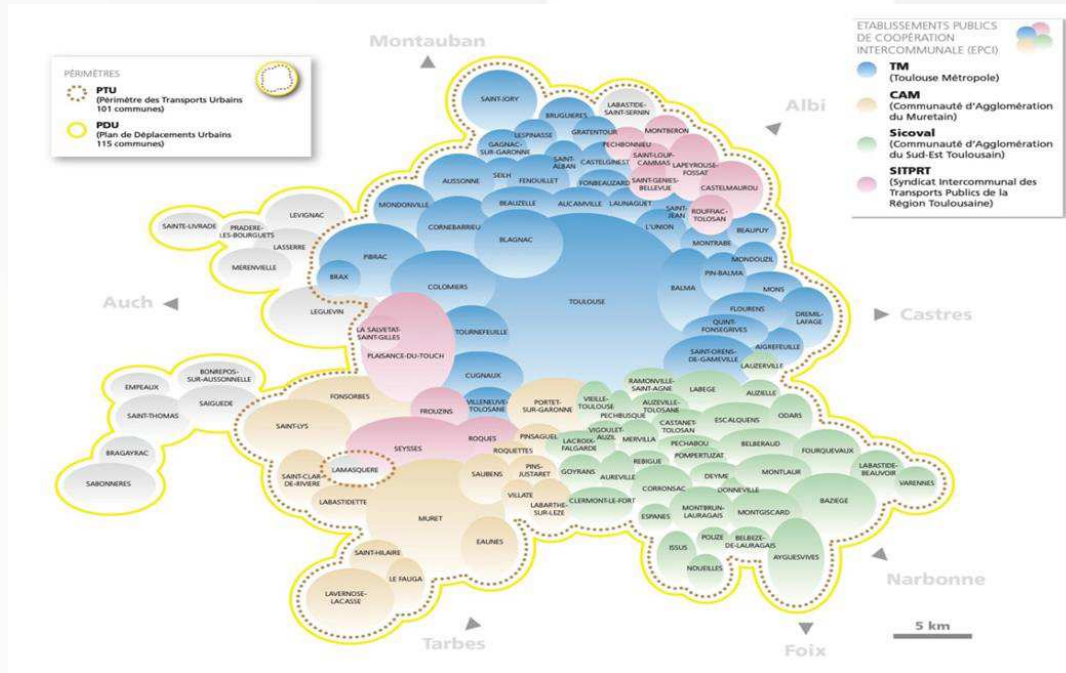
ACCESS·CITY
THE EUROPEAN AWARD
FOR ACCESSIBLE CITIES



Toulouse - An important area of influence

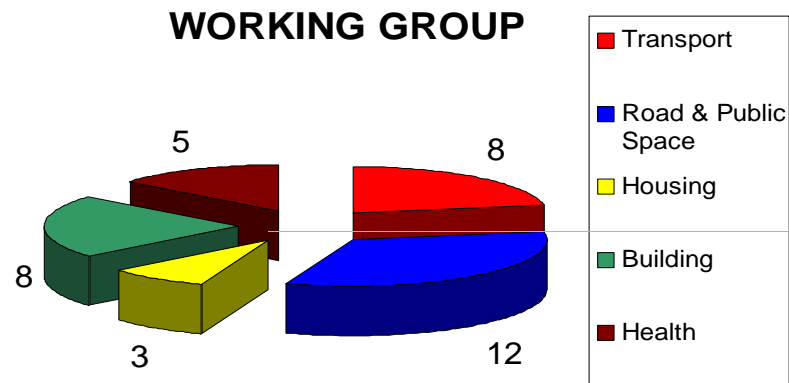
A wide public transport area

An important road network (3300 km)



Toulouse Métropole - 2016 15/03/2017

Universal accessibility is a work of concertation



Who ?	Toulouse Métropole	City of Toulouse	Tisséo SMTC	Tisséo EPIC	SMAT
Functions	Road & Public Space	Built	Organization of transport	Management of transport	Project construction
Consultation Validation Elected, Associations, technicians		Commission Accessibility for all Building and social	Commission accessibility Urban Network		
	Inter-municipal accessibility commission Roads & Public Spaces & Transport & Built Environment of the Metropolis				
Consultation Associations, Technicians	Working Group and Accessibility Workshops				

Universal accessibility is a global approach

- Above all, where priority actions are chosen ?

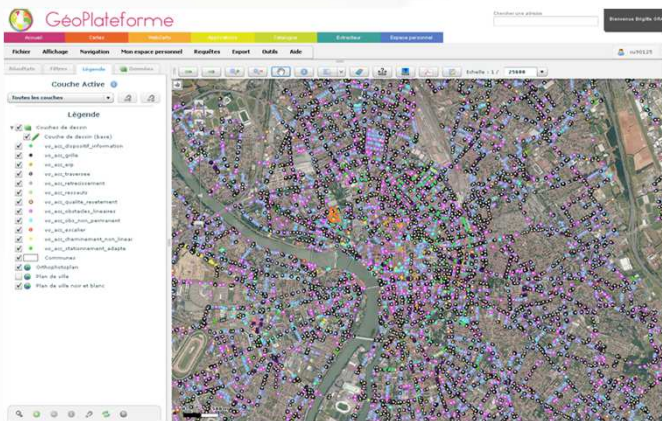


- Identify through the Accessibility Road Master Plan (ARMP)
 - ❖ 13000 attractive locations identified (health, Education, social health-care institution, Culture-Sport, Public Services)
 - ❖ 1250 km itinerary identified on three levels

Public transport accessibility program (Ad'Ap)

- ❖ Programmation of the accessibility of the bus stops : priority is given according to the ARMP and the number of users
- ❖ Accessibility of pedestrian paths in interface transport areas

- What are the barriers to accessibility ?



Identify through the diagnostic (Road) identifying barriers to accessibility (more than 3000 km sidewalks, 82 000 unconformities)

- ❖ 1/3 problems of mobility and citizen discipline.
- ❖ 1/3 requires only little interventions.
- ❖ 1/3 requires a study.

Universal accessibility requires tools



Charter of accessibility of road and public spaces
<http://www.toulouse-metropole.fr/voirie-et-accessibilite>

The prescription book of the development of the transport authority Tisséo

<http://www.smtc-tisseo.fr/index.php/accueil/presse-et-publications/publications-smtc>



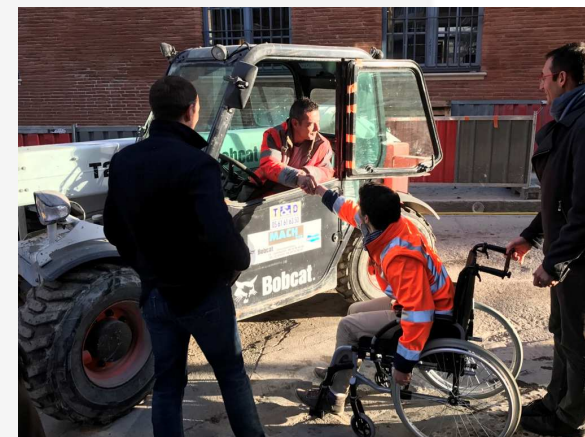
Specifications of Toulouse city regulations on management of available public buildings and events.

<http://www.toulouse.fr/web/social/handicap-et-accessibilite/accessibilite-etablisements-recevant-du-public>

toulouse
métropole

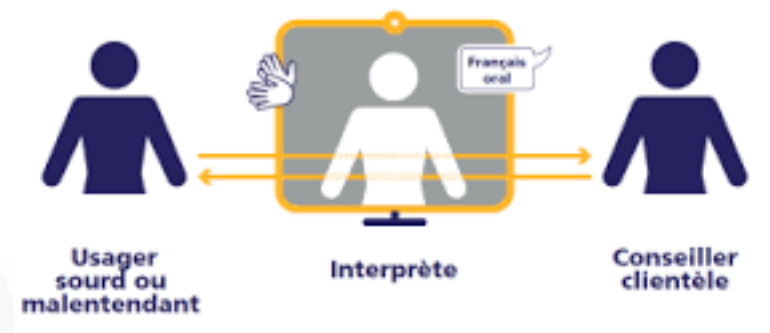
Universal accessibility – Sensitization of actors making public space & transport

- ❖ The scenario allows to touch, to feel physically the reasons of the technical rules.
- ❖ 50 agents of the metropole were placed in a situation of handicap (visual, motor and hearing) on a well defined path



Immediate consequence : construction site supervisor was invited to test his entire construction site in a wheelchair.

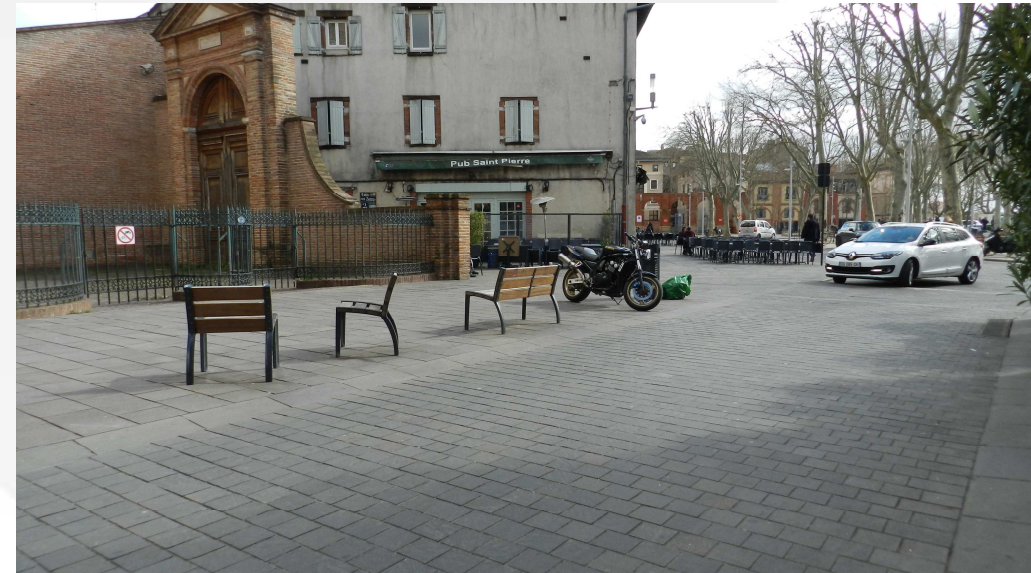
TISSEO staff working in Transport agencies and also bus drivers are trained to welcome disabled people (video interface for hearing impairment people, bus drivers must stop in front of the blind user...)



Some exemplary achievements



Pebbles to alert blind people from the edge of the dock



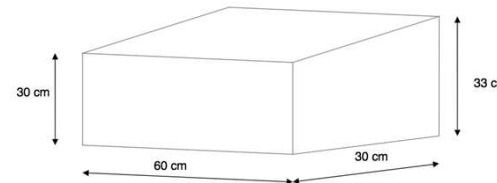
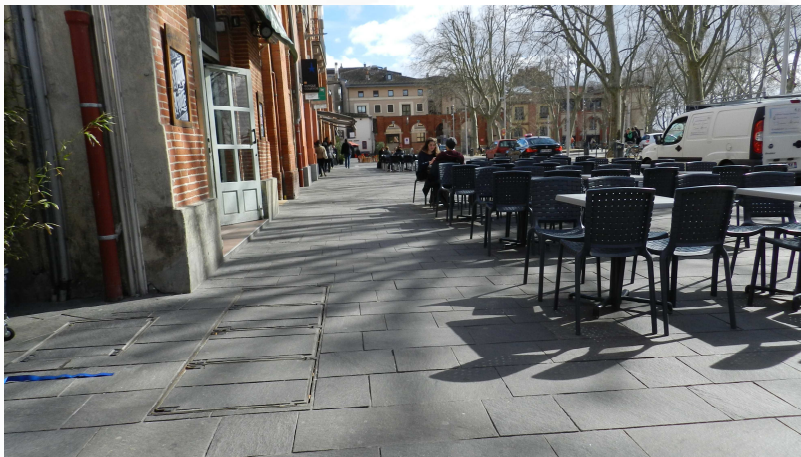
Delimitation of the pedestrian zone and vehicle zone in the meeting areas
Accessible:

Detectable on foot by the visually impaired, accessible by people in wheelchairs.

Comfortable: No risk of falling

Aesthetics: Urban

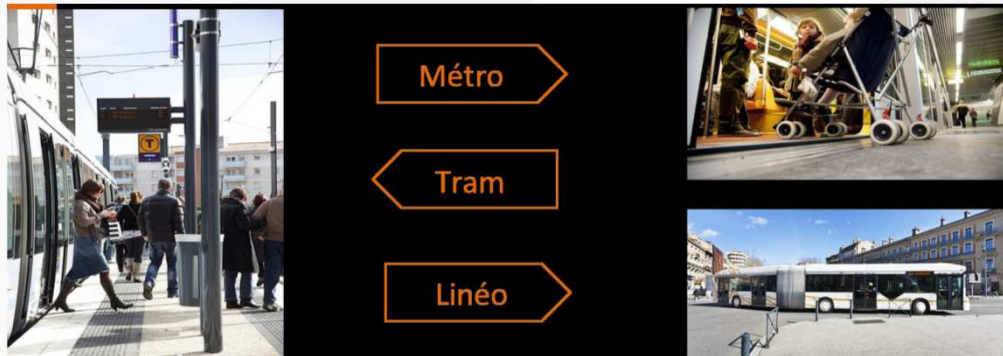
Made to measure in stone



Curbside

Actions for accessibility in public transport

The main transport lines are totally accessible



« Linéo », the top of the range bus lines



Actions for accessibility in public transport

Making metro within everyone's reach



Actions for accessibility in public transport

Metro: Draw me a station

Allowing cognitive disabled persons to travel by themselves is quite challenging. Tisséo decided to help them to use the metro by adding imagery to the names of the stations



**City of Toulouse and Toulouse Metropole
Urban services**

Brigitte GRASSET

Head of office-road and street policies
Including accessibility of public spaces

brigitte.grasset@toulouse-metropole.fr

Céline COHEN

Head of mobility coordination

celine.cohen@toulouse-metropole.fr

Thank you for your attention