

A EXPRESSÃO URBANA DA ESTRUTURA COMERCIAL DE LISBOA

Alessia Allegri



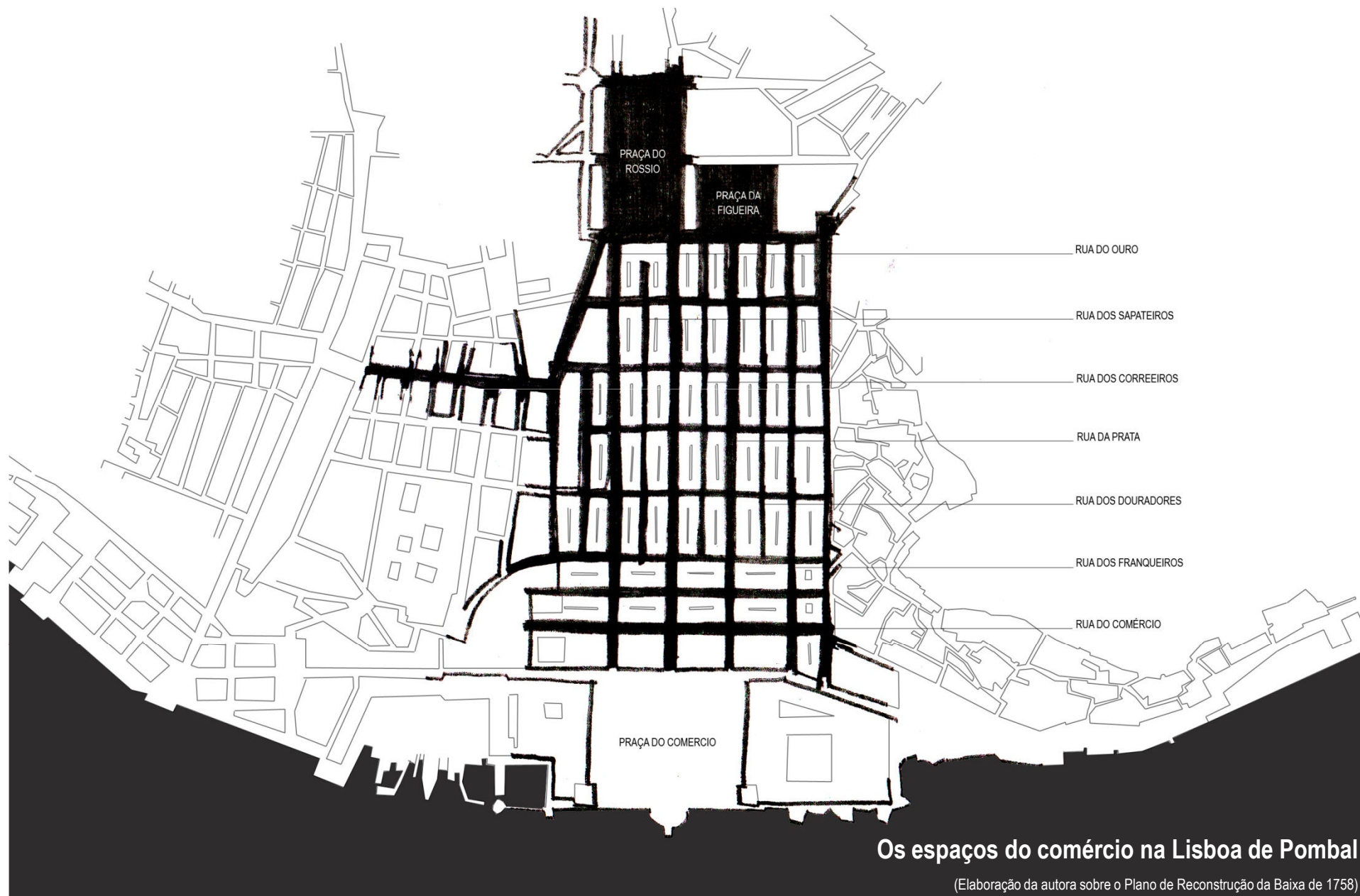
RUA + LARGO = COMÉRCIO E ESPAÇO PÚBLICO



Os espaços do comércio na Lisboa Medieval

(Elaboração da autora sobre a Planta da Cidade de Lisboa de João Nunes Tinoco de 1650)

TRAZADO REGULAR + PRAÇAS = COMÉRCIO E ESPAÇO PÚBLICO



Os espaços do comércio na Lisboa de Pombal

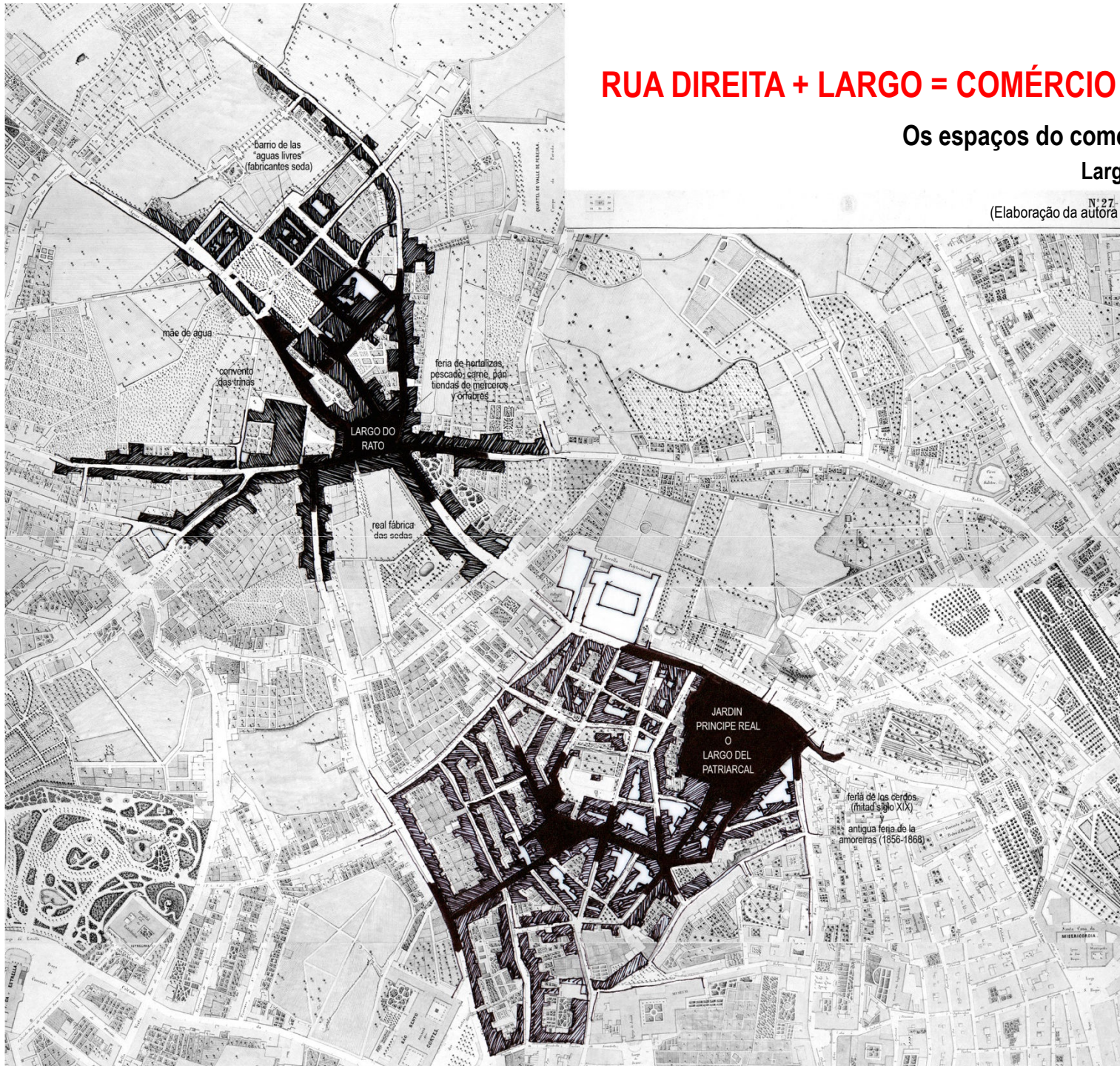
(Elaboração da autora sobre o Plano de Reconstrução da Baixa de 1758)

RUA DIREITA + LARGO = COMÉRCIO E ESPAÇO PÚBLICO

Os espaços do comércio na Lisboa “no oficial”

Largo do Rato e Largo do Patriarcal

N.º 27
(Elaboração da autora sobre o Plano de Lisboa de Filipe Folque de 1856)



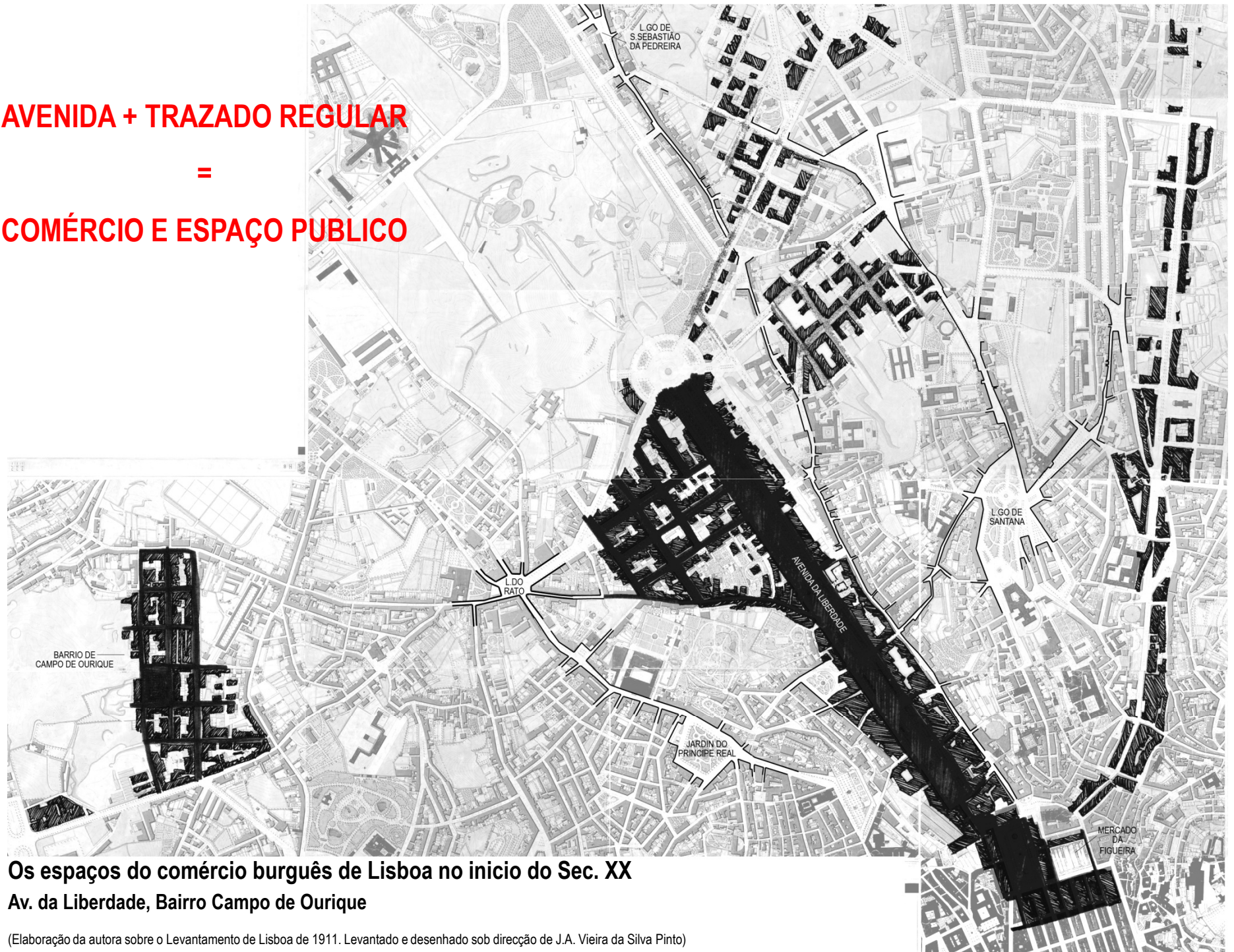


RUA DIREITA + LARGO = COMÉRCIO E ESPAÇO PÚBLICO

Os espaços do comércio na Lisboa “no oficial”.
Largo S. Sebastião da Pedreira, Campo de Santana

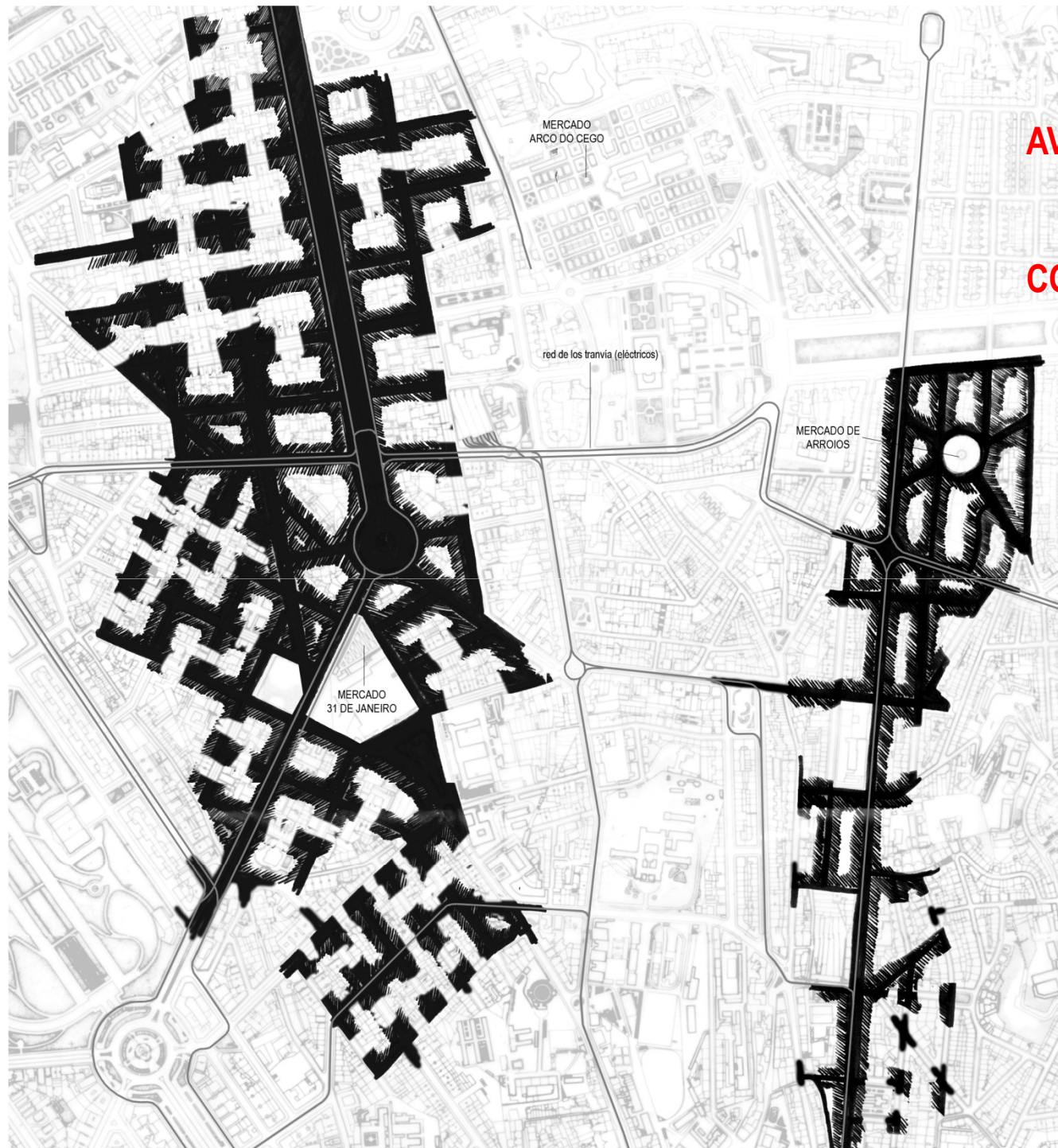
(Elaboração da autora sobre o Plano de Lisboa de Filipe Folque de 1856)

AVENIDA + TRAZADO REGULAR
=
COMÉRCIO E ESPAÇO PÚBLICO



Os espaços do comércio burguês de Lisboa no início do Sec. XX
Av. da Liberdade, Bairro Campo de Ourique

(Elaboração da autora sobre o Levantamento de Lisboa de 1911. Levantado e desenhado sob direcção de J.A. Vieira da Silva Pinto)



AVENIDA + TRAZADO REGULAR

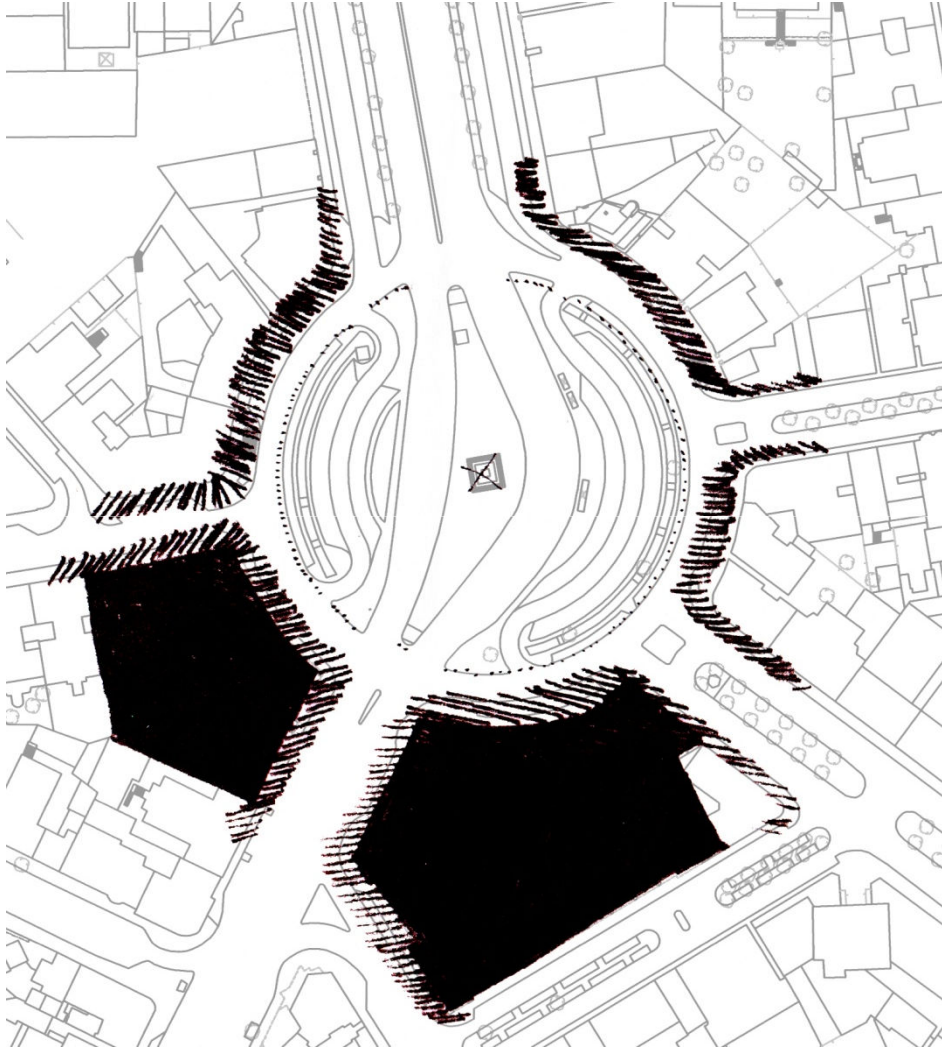
=

COMÉRCIO E ESPAÇO PÚBLICO

**Os espaços do comércio burguês
de Lisboa na metade do Sec. XX
Avenidas Novas, Av. Almirante Reis**

(Elaboração da autora sobre o Plano de Lisboa de 1960)

COMPLEXOS COMERCIAIS = COMÉRCIO E ESPAÇO PÚBLICO

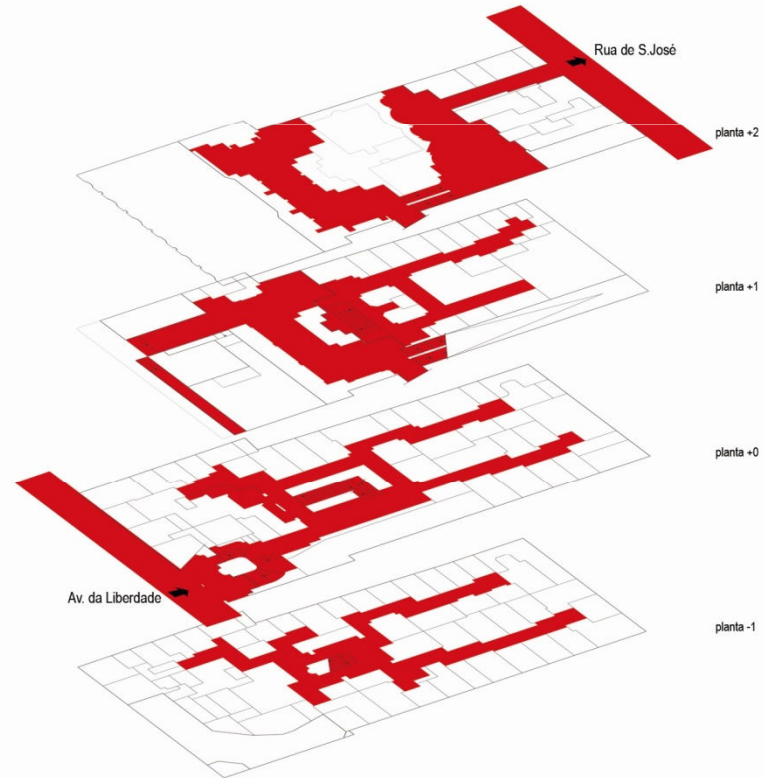
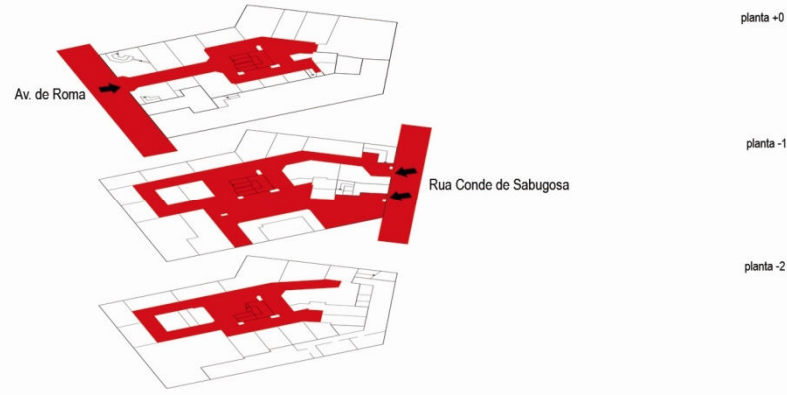


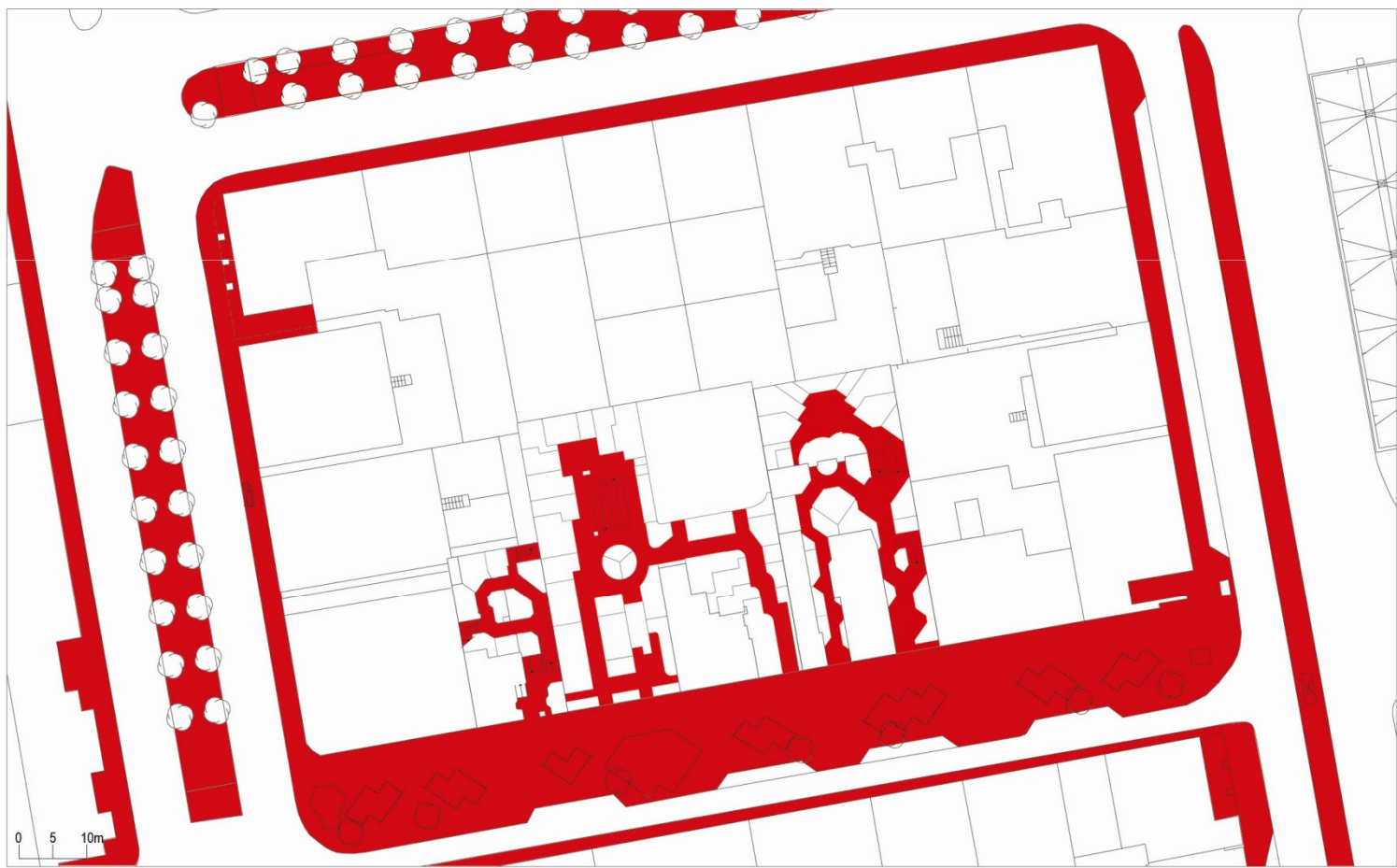
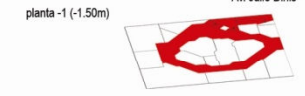
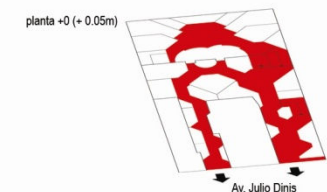
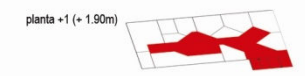
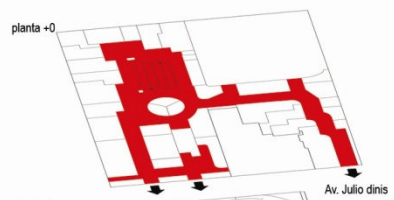
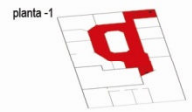
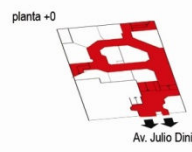
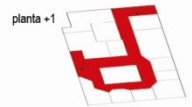
Os espaços do comércio na Praça Duque de Saldanha

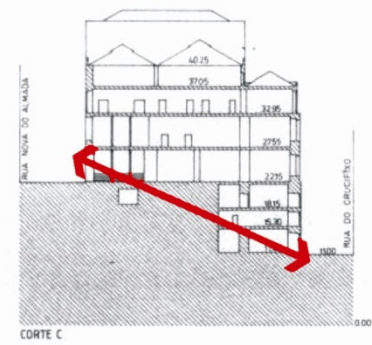
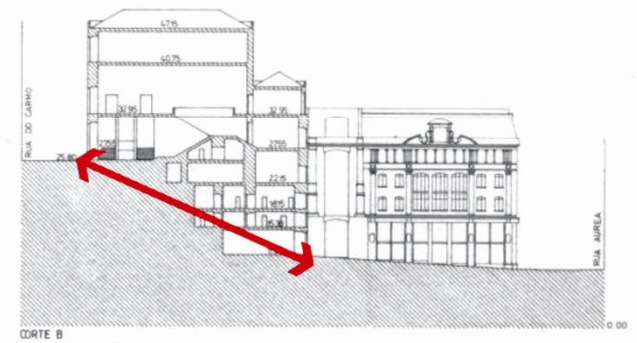
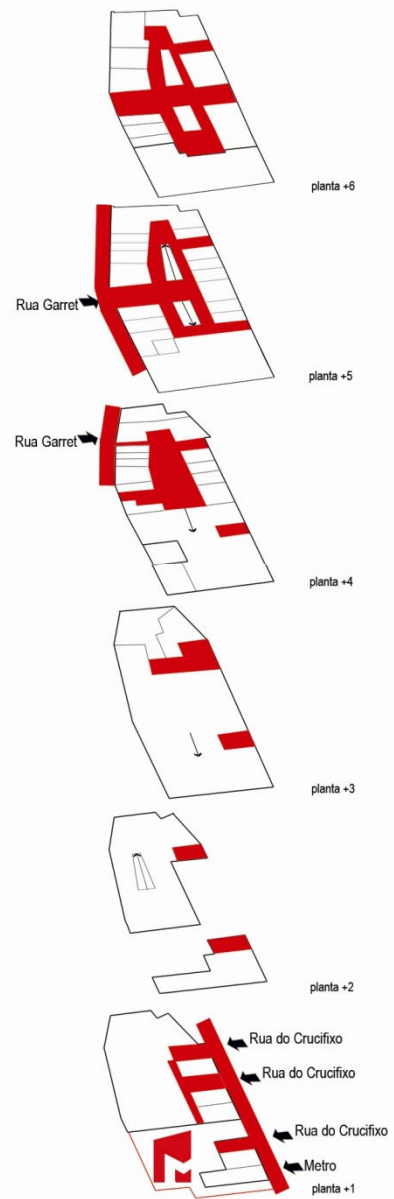
(Elaboração da autora sobre o plano actual da cidade)

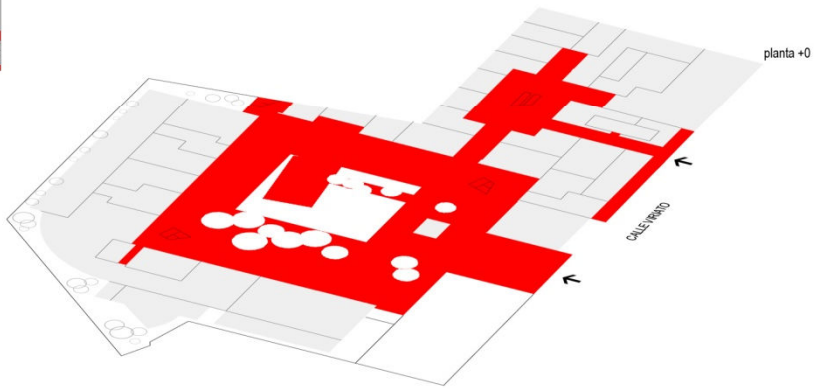
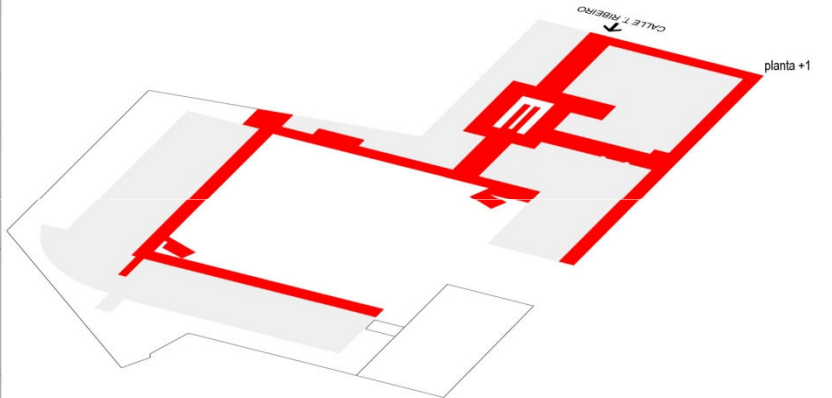


0 5 10m

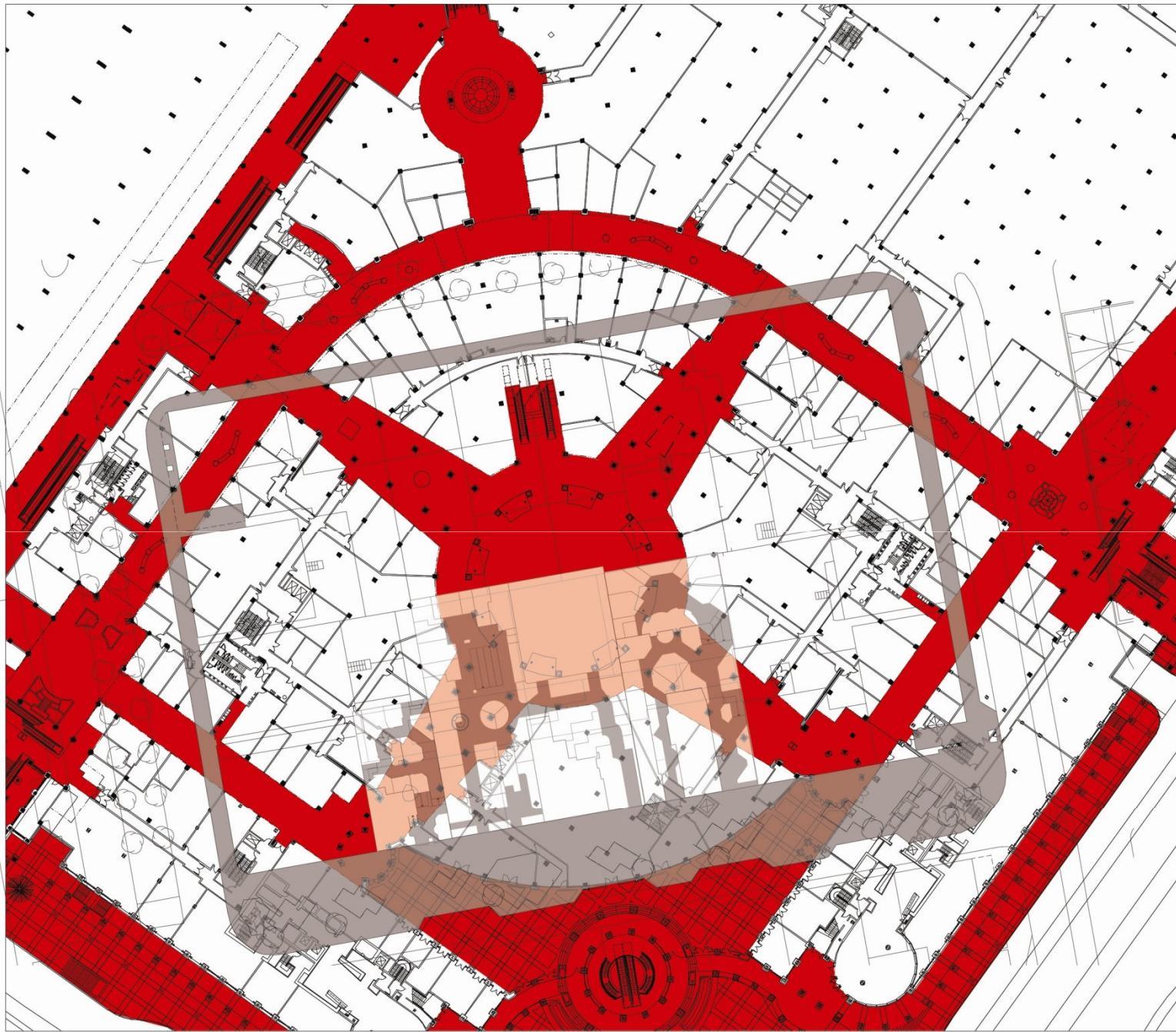




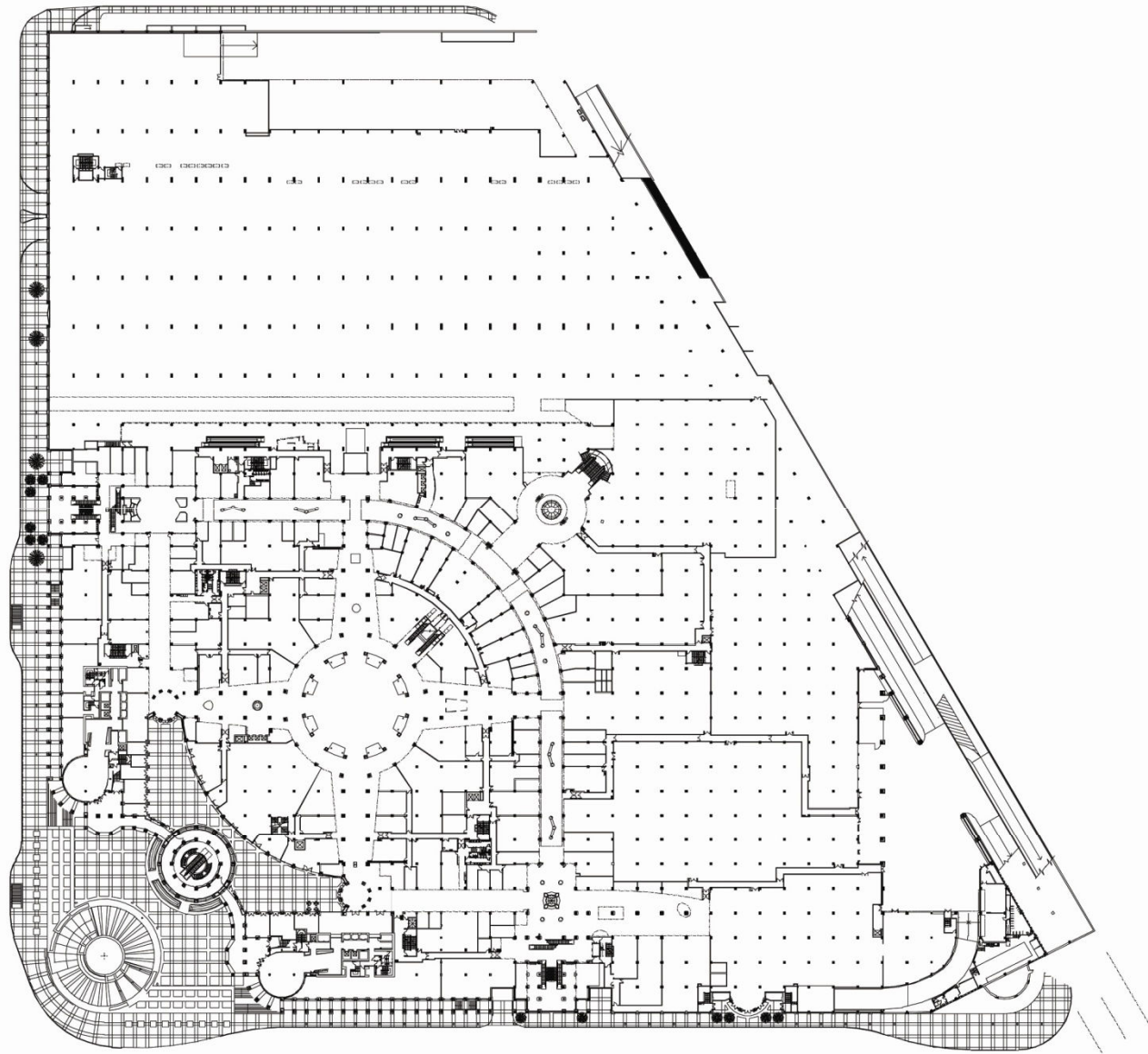




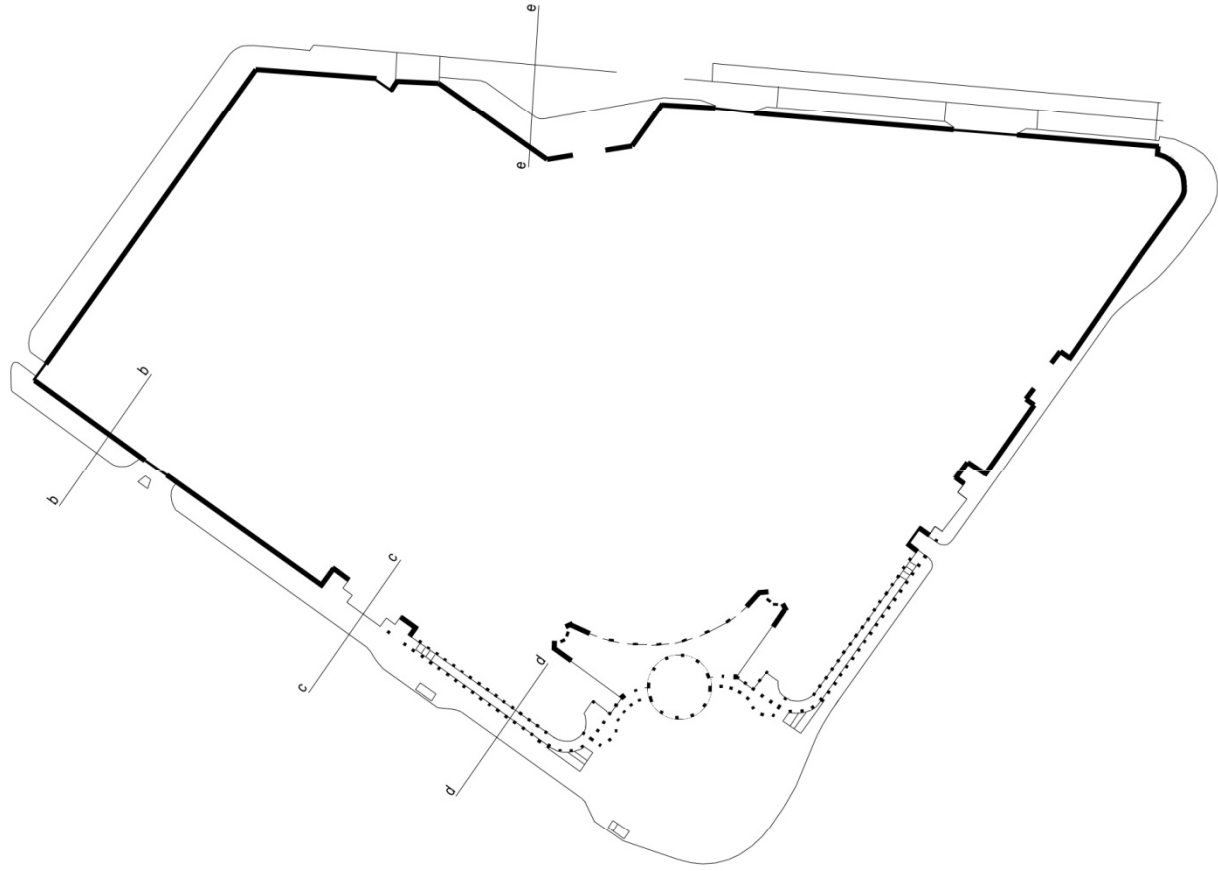


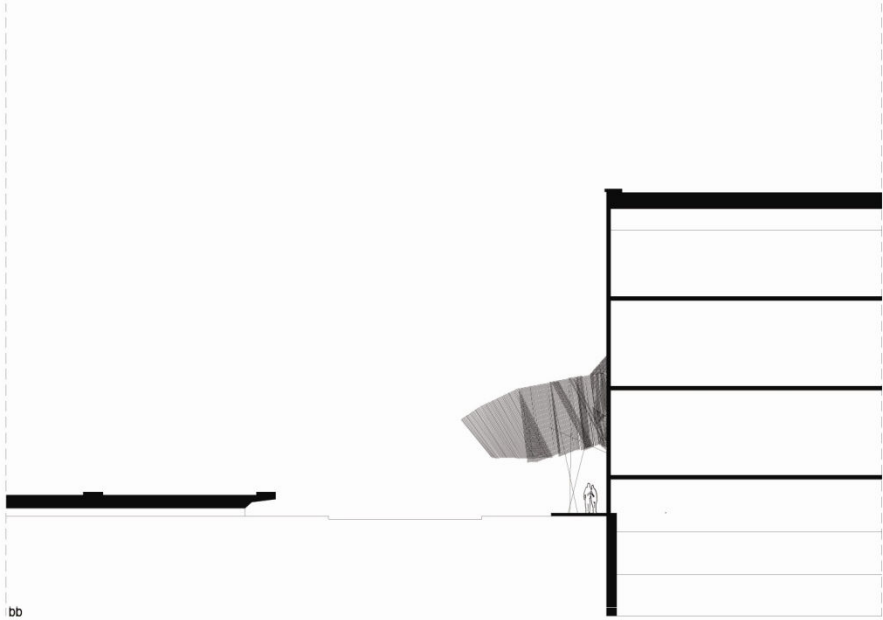


0 5 10m

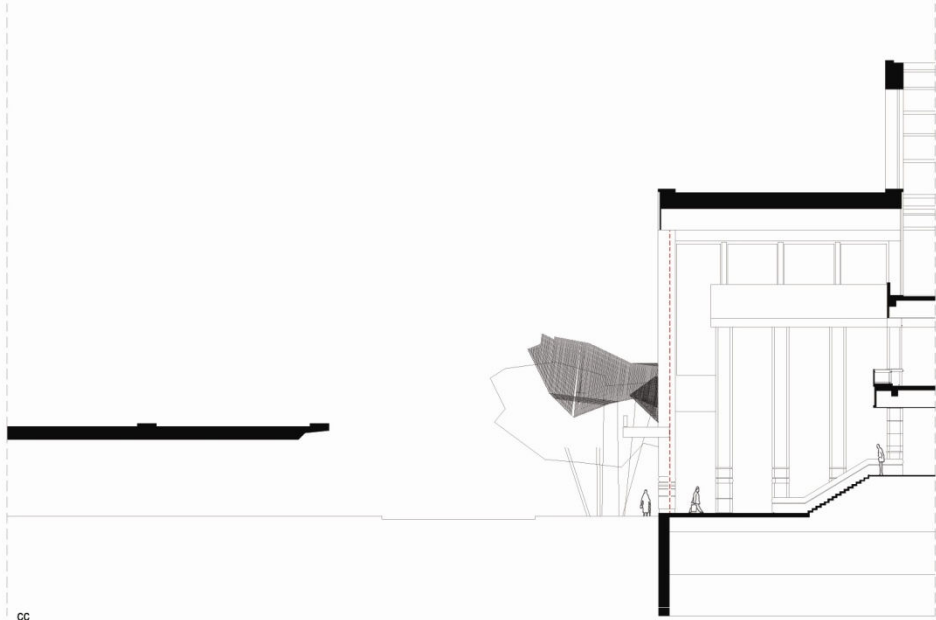


0 5 10m

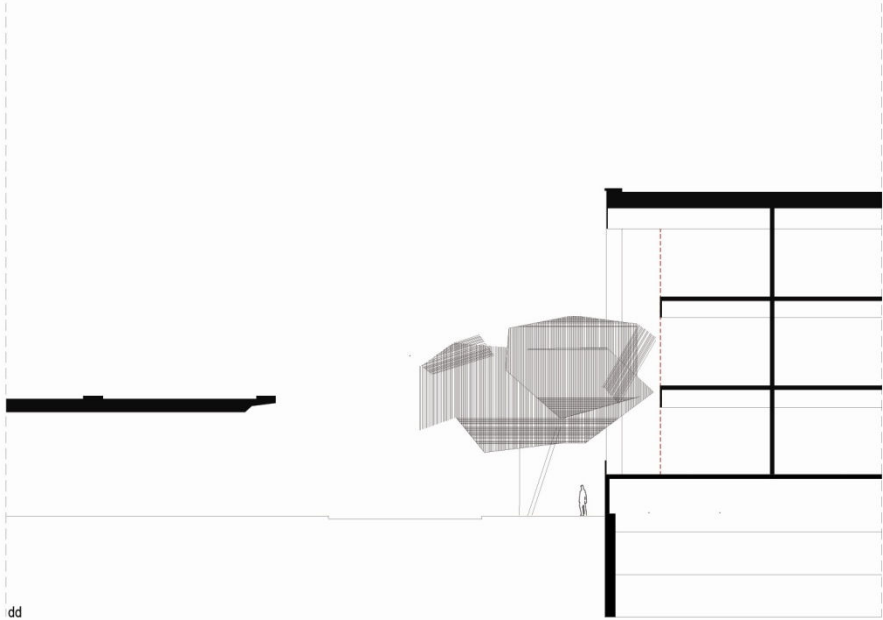




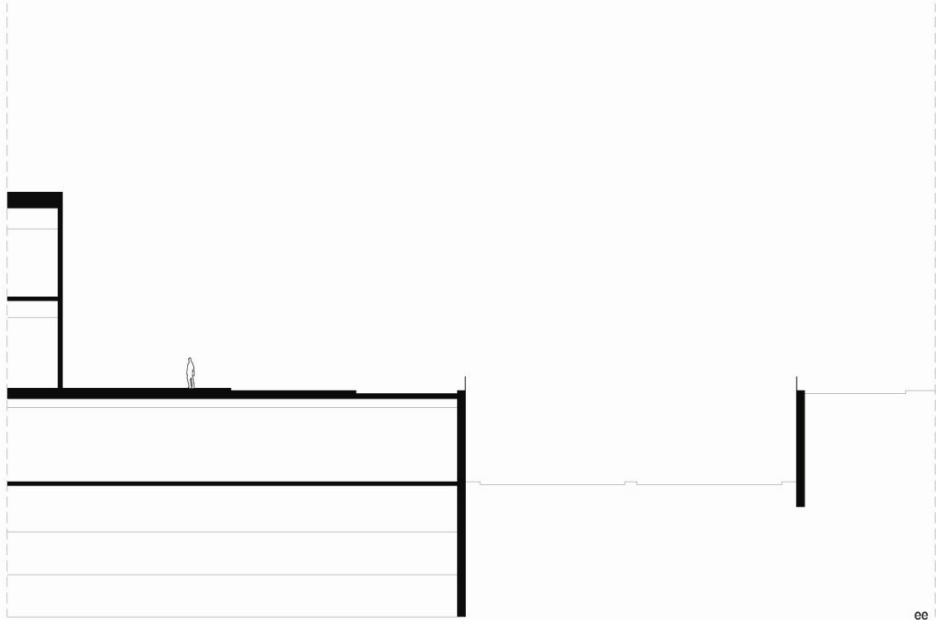
bb



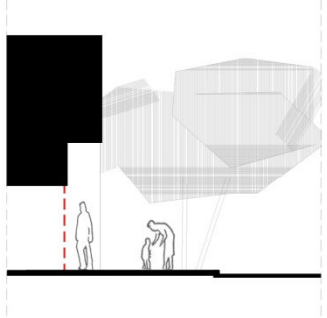
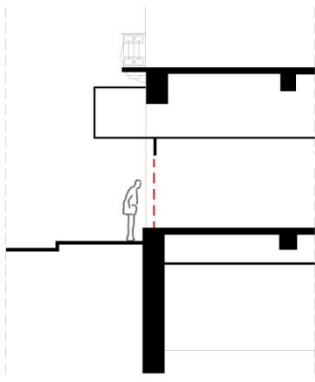
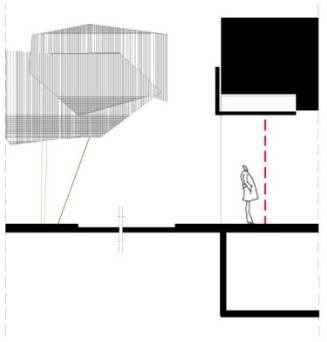
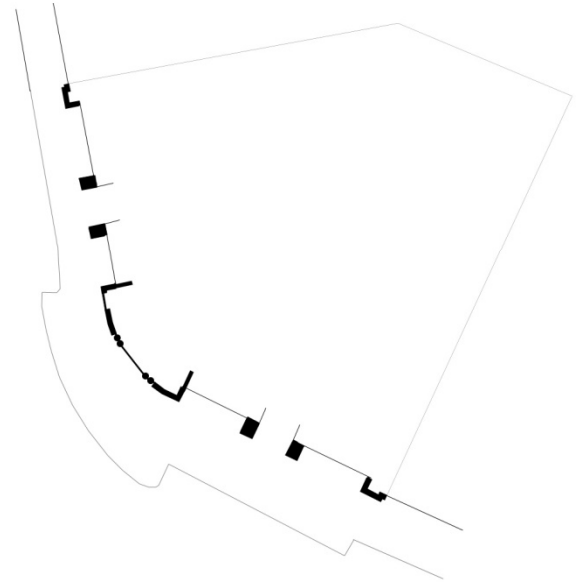
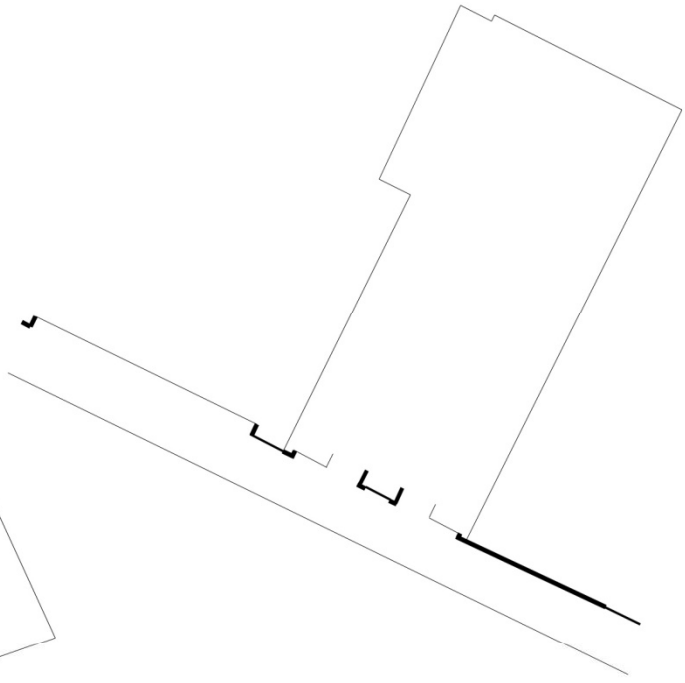
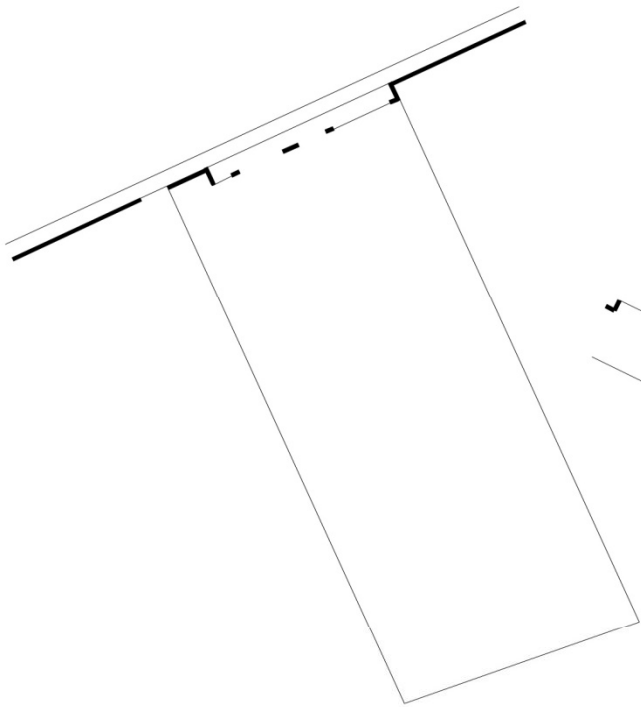
cc

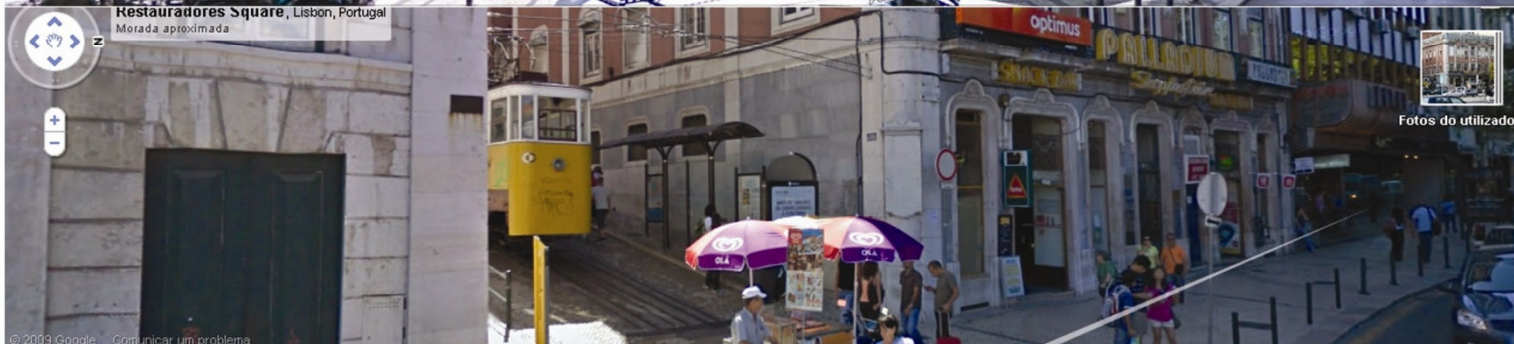


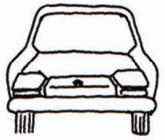
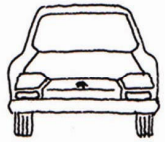
dd



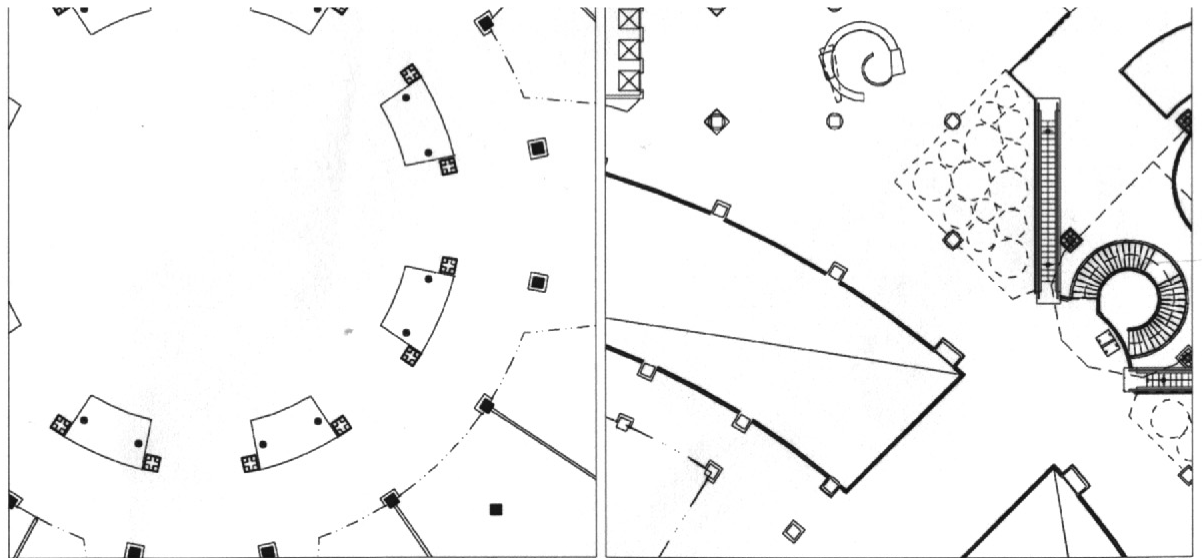
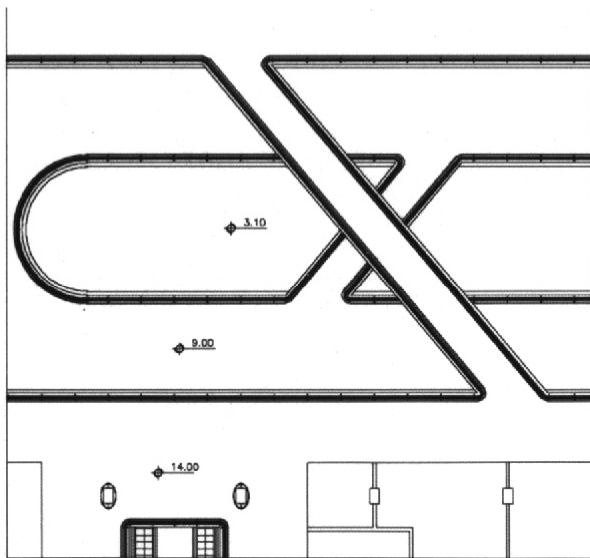
ee



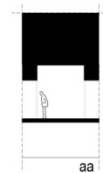
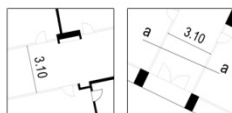




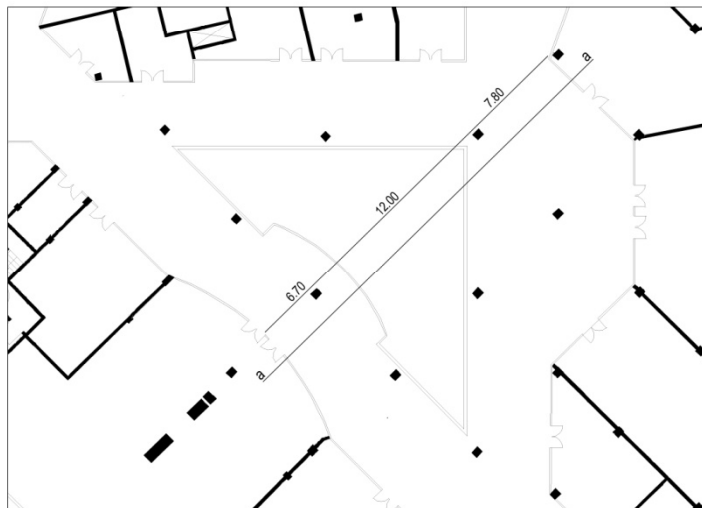
(fuente: Jan Gehl, "Life Between Buildings. Using Public Space")



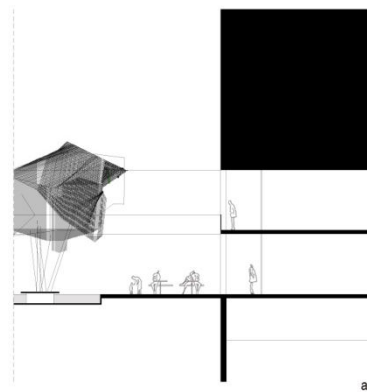
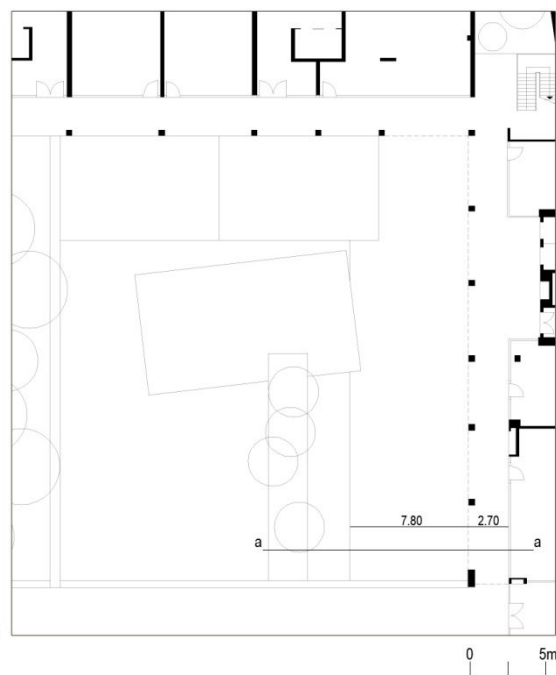
BLOCO 10

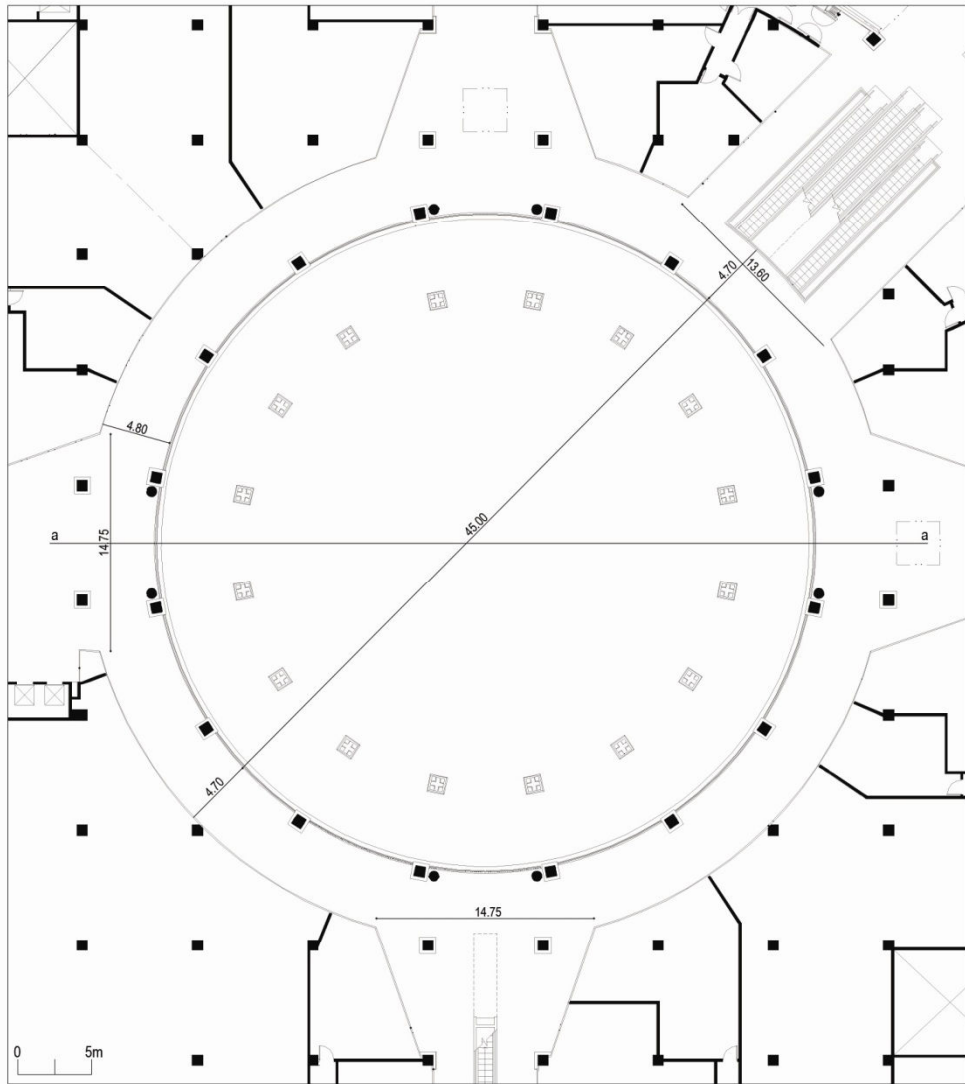


SALDANHA RESIDENCE

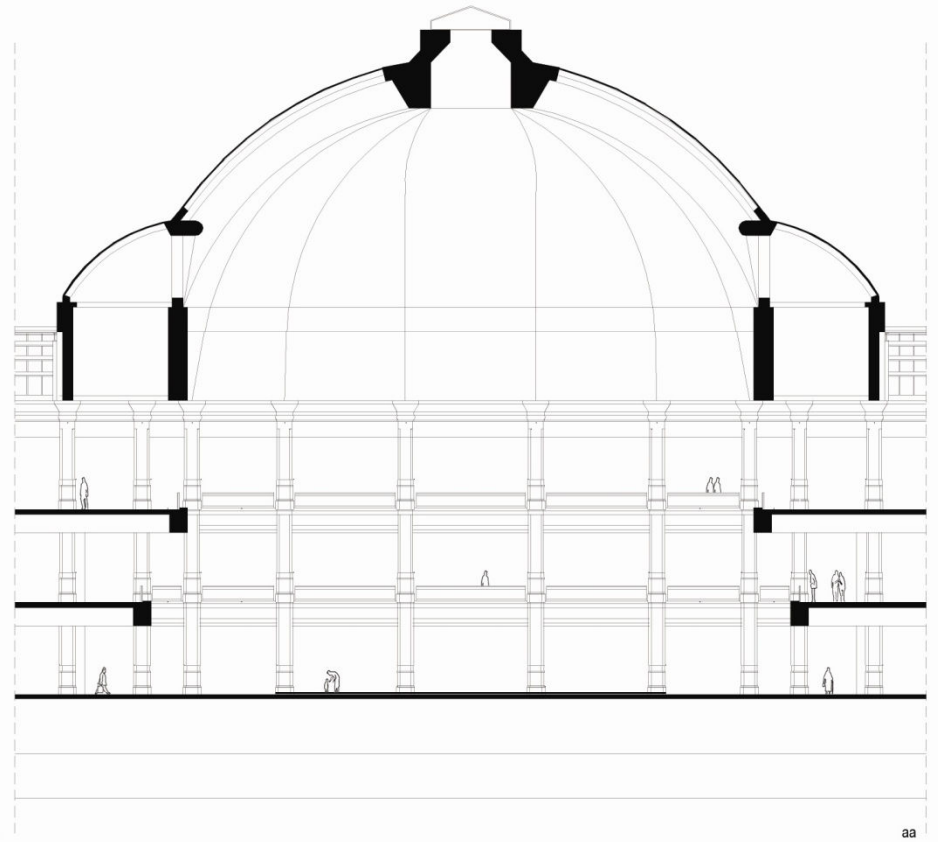
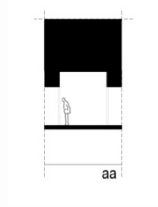


PICOAS PLAZA





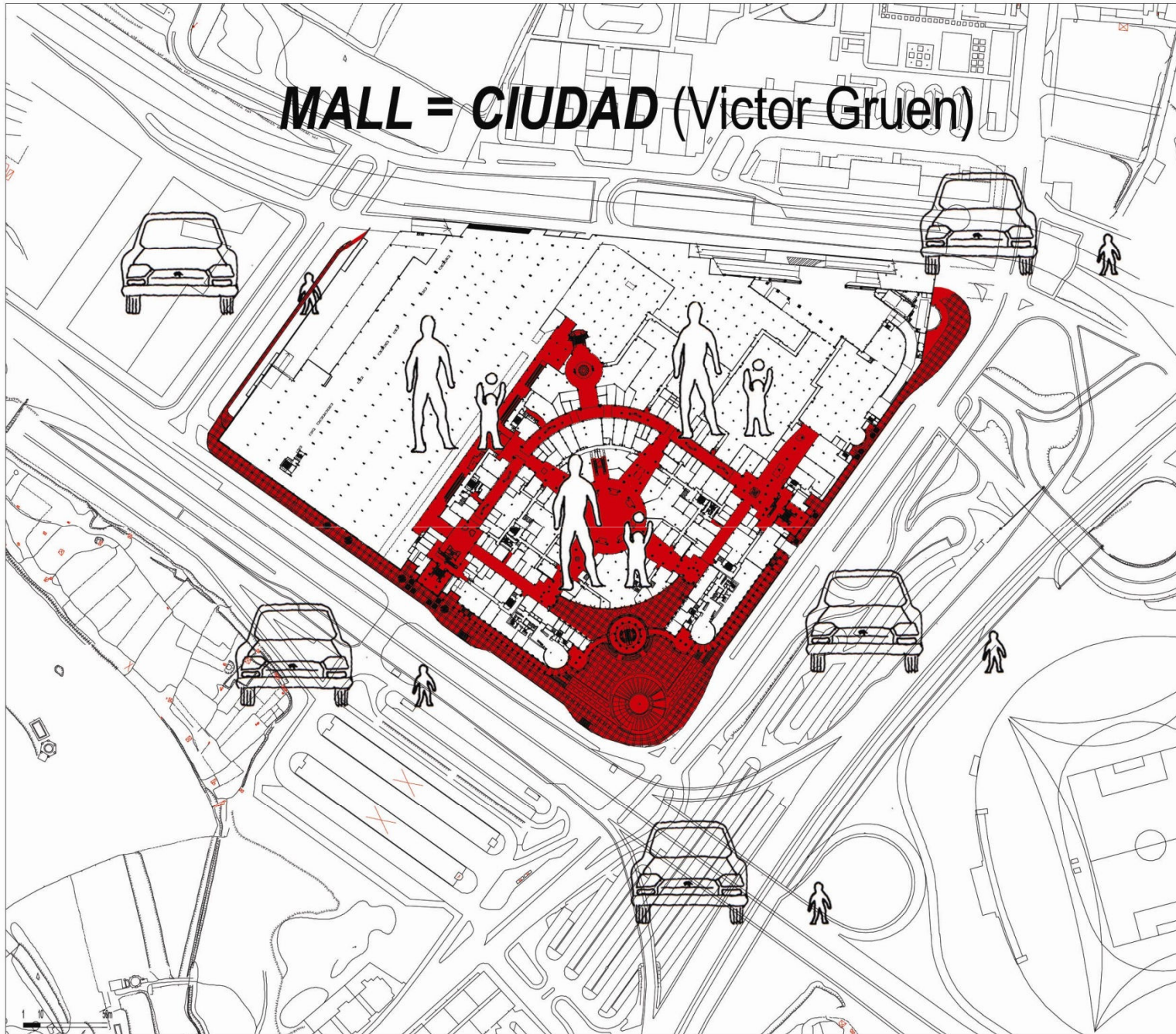
COLOMBO



aa



MALL = CIUDAD (Victor Gruen)





**ERA UMA VEZ
UM CENTRO
COM UM JARDIM
NO MEIO DE
400 LOJAS.**



COLOMBO

TEM TUDO O QUE POSSA IMAGINAR.